

INVENTORY STORAGE SOLUTIONS



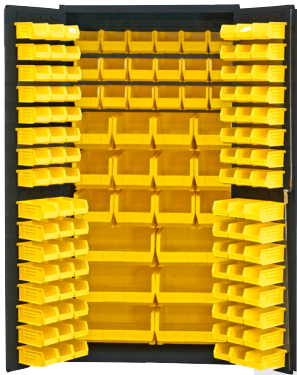
BY

BRAFASCO

Save time and money by organizing your valuable inventory with storage solutions for your jobsite or facility.



CABINETS



HEAVY DUTY CABINET WITH BINS

- 14 gauge
- 3-point locking system with keyed handle and lock rods, 4 keys included
- Hook-On-Bins® installed with no tools required
- Cabinets ship fully assembled
- Black, textured powder coat finish

PRODUCT # **BFC3501BDLP132**
 DIMENSIONS **36 X 24 X 72"**
 BIN DIMENSIONS **(48) 4 X 5 X 3"**
(48) 4 X 7 X 3"
(18) 6 X 11 X 5"
(12) 8 X 15 X 7"
(6) 16 X 15 X 7"
 SHIP WEIGHT **402 LBS.**

DURHAM MFG
Est. 1922



HEAVY DUTY CABINET

- 12 gauge
- Shelves bolt into place easily using fasteners provided and adjust on 2-1/4" centers
- 6" legs provide access for forklifts; pre-punched holes allow for lagging to the floor (constructed of 3/16" steel)
- Cabinets ship fully assembled
- Black, textured powder coat finish

PRODUCT # **BFCHDC2436784S**
 DIMENSIONS **36 X 24 X 78"**
 SHELF CAPACITY **(4) 1900 LBS.**
 LOCK TYPE **PAD-LOCKABLE**
 SHIP WEIGHT **452 LBS.**

DURHAM MFG
Est. 1922



WELDED STORAGE CABINET

- 20 gauge
- Suitable for office, plant, school or institutional storage needs
- Fully adjustable shelves, recessed handle
- Charcoal colour

PRODUCT # **B4005**
 DIMENSIONS **18 X 36 X 72"**
 SHELF CAPACITY **(4) 150 LBS.**
 SHIP WEIGHT **140 LBS.**



MOBILE CABINET

- 12 gauge
- 6" x 2" phenolic casters (2 rigid, 2 locking swivel)
- Side handle for easy maneuvering
- Adjustable shelves
- Cabinets ship fully assembled
- Durable black, textured powder coat finish

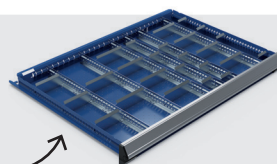
PRODUCT # **BFCHDCM484S08TD918**
 DIMENSIONS **48 X 24 X 80"**
 SHELF CAPACITY **(4) 900 LBS.**
 LOCK TYPE **PAD-LOCKABLE**
 SHIP WEIGHT **587 LBS.**

DURHAM MFG
Est. 1922



DRAWER CABINET

- Lockable with standard key
- Manufactured in Canada
- 100% drawer extension
- Includes partitions and dividers
- Lifetime warranty on drawer rolling mechanism
- Other colours available



PRODUCT # **MSSRRC10001**
 DIMENSIONS **36 X 24 X 46"**
 DRAWER CAPACITY **400 LBS.**
 DRAWERS **8**
 SHIP WEIGHT **570 LBS.**





AEROSOL SAFETY CABINET

- FM approved
- Holds 24 aerosol cans
- 1 door, manual close
- 2 sliding shelves

PRODUCT # **DUR1012MA50**
 DIMENSIONS **23 X 18 X 35"**
 SHIP WEIGHT **170 LBS.**

DURHAM MFG
 Est. 1922



SAFETY CABINET

- FM Approved
- Sturdy all welded 18 gauge double wall steel construction
- Manual closing doors
- 2" wide louvers support shelves, adjustable on 4" centers
- 2" Deep leak proof base
- Safety yellow powder coat finish

PRODUCT # **JMA894500**
 DIMENSIONS **65 X 43 X 18"**
 CAPACITY **45 GALLONS**
 # OF SHELVES **2**
 SHIP WEIGHT **266 LBS.**

Justrite



UTILITY CABINET

- Prime cold rolled steel construction
- All-welded construction
- Full piano hinge, 2 adjustable shelves included
- Keyhole slots in back allow wall hanging pad lock hasp (lock not included)
- Black powder coat finish

PRODUCT # **DUR05508S700**
 DIMENSIONS **13-3/4 X 12-3/4 X 30**
 SHIP WEIGHT **24 LBS.**

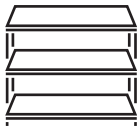
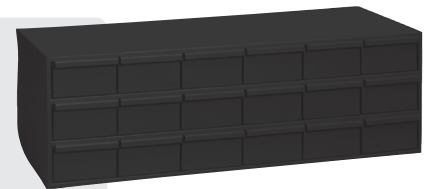
DURHAM MFG
 Est. 1922

DRAWER CABINET

- Prime cold rolled steel construction
- High density drawer cabinet; stores large quantities of small parts
- Drawers have full width handles and easy glide runners
- Cabinets can be stacked using mounting holes
- Ships fully assembled
- Black powder coat finish

PRODUCT # **DUR00508S700**
 DIMENSIONS **33-3/4 X 11-5/8 X 10-7/8"**
 DRAWER DIMENSIONS **4-7/8 X 11-1/4 X 2-3/4"**
 # OF DRAWERS **18**
 SHIP WEIGHT **44 LBS.**

DURHAM MFG
 Est. 1922



SHELVING AND RACKING



MSSMRS11501

MSSMRS11502

HEAVY DUTY SHELVING

- 3,500 lbs. total weight capacity
- Strong powder coated steel construction
- Beams adjustable on 2" increments
- Easy to assemble, clear access on all 4 sides
- Made in Canada



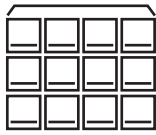
PRODUCT NO.	DIMENSIONS	MATERIAL	SHIP WEIGHT
MSSMRS11501	72 X 24 X 75"	STEEL	250 LBS
MSSMRS11503	96 X 36 X 75"	STEEL	445 LBS
MSSMRS11502	72 X 24 X 75"	PARTICLE BOARD	190 LBS
MSSMRS11504	96 X 36 X 75"	PARTICLE BOARD	305 LBS



INDUSTRIAL STEEL SHELVING

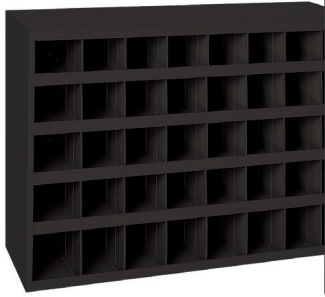
- Shelves adjustable on 1" increments
- Easy to Assemble
- Powder coated steel construction
- Made in Canada

PRODUCT NO.	DIMENSIONS	WEIGHT CAPACITY	SHIP WEIGHT
MSSSS11501	36 X 18 X 75"	800 LBS	135 LBS
MSSSS11502	48 X 24 X 75"	600 LBS	170 LBS



METAL AND PLASTIC BINS

DUR34908S697



DUR35008S697

9" DEEP PART BINS

DURHAM MFG
Est. 1922

- All welded, prime cold rolled steel, modular with all other 9" deep bins
- Fully hemmed 1-1/8" bin fronts to hold labels and retain parts
- Mounting holes are located in the top and bottom
- Ships fully assembled
- Black powder coat finish

PRODUCT NO.	DIMENSIONS	OPENINGS	BIN DIMENSIONS	SHIP WEIGHT
DUR34408S697	33-3/4 X 8-1/2 X 19-1/4"	32	4 X 8-3/8 X 4-1/2"	29 LBS
DUR34908S697	33-3/4 X 8-1/2 X 22-1/4"	40	(32) 3-3/16 X 8-3/8 X 2-7/8" (8) 3-13/16 X 8-3/8 X 4"	34 LBS
DUR35008S697	33-3/4 X 8-1/2 X 42"	72	4 X 8-3/8 X 4-11/2"	55 LBS
DUR38208S699	33-3/4 X 9 X 5-3/4"		BASE FOR 9" MODELS	13 LBS

12" DEEP PART BINS WITH SLOPE SHELF DESIGN

DURHAM MFG
Est. 1922

- All welded, prime cold rolled steel
- Fully hemmed 1-1/8" bin fronts to hold labels and retain parts
- Roll-formed sides for increased strength and stability
- Sloped shelves for easy removal of contents
- Modular with most 12" deep bins and drawer cabinets; mounting holes are located in the top and bottom
- Ships fully assembled
- Black powder coat finish



DUR35108S700



DUR36308S700

PRODUCT NO.	DIMENSIONS	OPENINGS	BIN DIMENSIONS	SHIP WEIGHT
DUR35108S700	33-7/8 X 12 X 42"	20	8 X 11-7/8 X 8-1/2"	46 LBS
DUR35908	33-3/4 X 12 X 23-7/8"	40	3-13/16 X 11-7/8 X 3-3/16"	46 LBS
DUR36308S700	33-3/4 X 12 X 42"	72	4 X 11-7/8 X 4-1/2"	69 LBS
DUR36408S699	33-3/4 X 12-1/4 X 5-3/4"	BASE FOR 12" MODELS	--	13 LBS



DURHAM MFG
Est. 1922

WALL MOUNTABLE LOUVERED PANEL

- Constructed of 16 gauge steel
- Louvers accommodate all sizes of Hook-On-Bins® (Bins sold separately*)
- 1/4" holes for wall mounting - hardware not included
- Durable, textured, powder coat finish

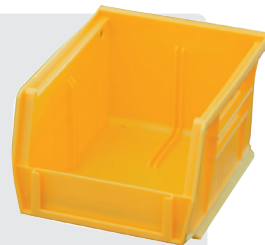
PRODUCT # **DURLPW345X1295**
 DIMENSIONS **34-1/2 X 12"**
 HOOK-ON-BINS® **(24) DURPB3021021**
 (QUANTITY TO FIT **(24) DURPB3022021**
 LOUVERED PANEL) **(12) DURPB3023021**
(4) DURPB3024021
(2) DURPB3025021
 CAPACITY **175 LBS.**
 SHIP WEIGHT **8 LBS.**

HOOK-ON BINS®

- Molded using durable polypropylene plastic, with top edges that allow stacking on any shelf
- Angled front edge makes it easy to see contents and to pick parts
- Slots in front hold identification tags, cards or labels
- Molded finger grips make handling easy and comfortable
- Dividers can be placed horizontally or vertically
- Divider break away features allow sizing of the dividers so you can access all products when bins are stacked
- Fits neatly on other cabinet and shelving brands

PRODUCT NO.	DIMENSIONS	WEIGHT CAPACITY	SHIP WEIGHT
DURPB3021021	4 X 5 X 3"	10 LBS	5 LBS
DURPB3022021	4 X 7 X 3"	10 LBS	7 LBS
DURPB3023021	6 X 11 X 5"	30 LBS	11 LBS
DURPB3024021	8 X 15 X 7"	60 LBS	20 LBS
DURPB3025021	16 X 15 X 7"	75 LBS	16 LBS

DURHAM MFG
Est. 1922



DURPB3021021



DURPB3025021



METAL SERVICE TRAYS AND RACKS



**DUR115085701
(LARGE TRAY)**

**DUR303085700
(4 DRAWER LARGE RACK*)**

**DUR308085697
(6 DRAWER SMALL RACK*)**

*TRAYS SOLD SEPERATELY

DURHAM MFG
Est. 1922

EASY GLIDE SLIDE RACK (HOLDS SMALL SERVICE TRAYS)

- Sturdy construction using prime cold-rolled steel
- Accommodates small trays
- Easy glide slides allow trays to move in and out smoothly
- Center braces on cradles provide extra rigidity
- Reinforced rack keeps boxes level
- Trays can be easily removed for transport to work areas
- Base is available as an accessory
- Black powder coat finish

PRODUCT NO.	DIMENSIONS	COMPARTMENTS	SHIP WEIGHT
DUR307085697	15-1/4 X 11-3/4 X 11-1/4"	4	21 LBS
DUR308085697	15-1/4 X 11-3/4 X 16-3/8"	6	28 LBS
OPTIONAL BASE			
DUR31508	15-1/2 X 12-1/8 X 15-1/8"	FOR MODELS: 306, 307, 308	12 LBS

EASY GLIDE SLIDE RACK (HOLDS LARGE SERVICE TRAYS)

- Sturdy construction using prime cold-rolled steel
- Each cradle holds up to 40 lbs.
- Easy glide slides allow trays to move in and out smoothly
- Center braces on cradles provide extra rigidity
- Reinforced rack keeps boxes level
- Trays can be easily removed for transport to work areas
- Base and locking hinge are available as accessories
- Black powder coat finish

PRODUCT NO.	DIMENSIONS	COMPARTMENTS	SHIP WEIGHT
DUR303085700	20 X 15-3/4 X 15"	4	29 LBS
OPTIONAL BASE			
DUR304085699	20-9/16 X 16-1/8 X 15"	--	15 LBS

LARGE AND SMALL SERVICE TRAYS

- Prime cold rolled steel outer shell
- Compartments have scooped bottoms to make part removal easy
- Full piano hinge on cover provides rigidity
- Handle allows for easy transport
- Positive pull-down latch keeps cover tightly closed to prevent part migration
- Racks, pouches and cover labels are available as accessories
- Black powder coat finish

PRODUCT NO.	DIMENSIONS	COMPARTMENTS	SHIP WEIGHT
DUR102085701	18 X 12 X 3" (LARGE TRAY)	24	32 LBS
DUR107085701	18 X 12 X 3" (LARGE TRAY)	32	32 LBS
DUR109085701	18 X 12 X 3" (LARGE TRAY)	21	32 LBS
DUR111085701	18 X 12 X 3" (LARGE TRAY)	20	32 LBS
DUR113085701	18 X 12 X 3" (LARGE TRAY)	16	32 LBS
DUR115085701	18 X 12 X 3" (LARGE TRAY)	12	32 LBS
DUR202085697	13-3/8 X 9-1/4 X 2" (SMALL TRAY)	24	24 LBS
DUR204085697	13-3/8 X 9-1/4 X 2" (SMALL TRAY)	21	24 LBS
DUR206085697	13-3/8 X 9-1/4 X 2" (SMALL TRAY)	20	24 LBS
DUR227085697	13-3/8 X 9-1/4 X 2" (SMALL TRAY)	17	24 LBS
DUR209085697	13-3/8 X 9-1/4 X 2" (SMALL TRAY)	16	24 LBS
DUR211085697	13-3/8 X 9-1/4 X 2" (SMALL TRAY)	12	24 LBS
DUR213085697	13-3/8 X 9-1/4 X 2" (SMALL TRAY)	8	24 LBS
DUR215085697	13-3/8 X 9-1/4 X 2" (SMALL TRAY)	VARIABLE	6 LBS

TWO-SIDED RAIL RACK

- Durable powder-coated finish
- 500 lbs capacity
- Heavy-duty steel construction
- Mobile kit available: AKRA30424M (sold seperately)
- Customizable bin size and colour options available colours (bins sold seperately)

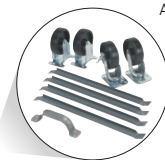
PRODUCT # **AKRA30016M**
DIMENSIONS **36 X 20 X 53"**
CAPACITY **500 LBS.**
SHIP WEIGHT **68 LBS.**

AK AK-WEST INC



**MOBILE KIT W/CASTERS
ALSO AVAILABLE**

SOLD SEPERATELY
AKRA30424M



BINS AVAILABLE (96) AKR30230YEL - 10-7/8X5-1/2X5"
(48) AKR30240YELLO - 14-3/4X8-1/4X7"